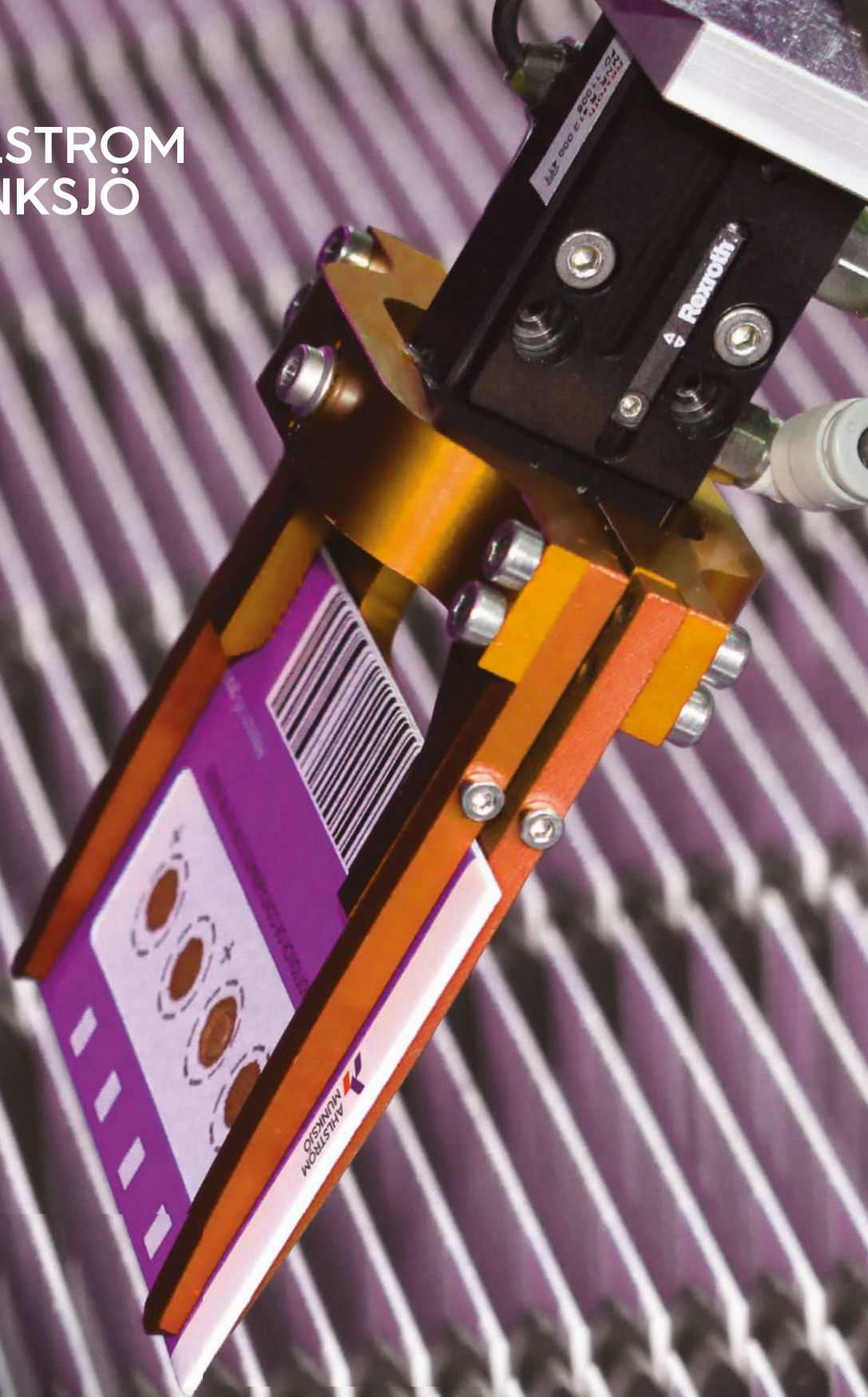




AHLSTROM
MUNKSJÖ



HIGH QUALITY AUTOMATION IN DBS

Ahlstrom-Munksjö AutoCollect™ card

Simplifying the processes, trusting your results

Ahlstrom-Munksjö AutoCollect™ cards are designed for microvolume sampling, transport and storage of dried blood spot (DBS) at ambient temperature.

The cassette format of the card with high stiffness provides a suitable fit with main laboratory automated equipment available on the market, including for example Camag DBS-MS 500, Hamilton EasyPunch and Spark Holland DBS Autosampler, allowing reliable DBS card processing, from detection of dried blood spot to the preparation of samples ready for LC/MS analysis.

The introduction of automation into the various steps of DBS sample processing has shown clear advantages and gains in productivity, including:

- **Traceability of operations**
- **Volume control**
- **Accuracy of timing**
- **Analysis of results instead of results acquisition**

AutoCollect™ cards can be used routinely in high-throughput environments and demonstrate to work efficiently in DBS extraction or direct elution.

Designed for automation

- **High quality paper:** Mass Spectrometry (MS) grade purity fiber-based material made in accordance to the highest manufacturing standards. The paper grade provides even and uniform distribution of biosamples
- **Reliable analysis:** no wet-strength additives or chemicals that could cause interferences with downstream analysis are used for fibers treatment
- **Stable and precise dimensions:** AutoCollect™ cards are available in a cassette format with high stiffness and accurate sizings
- **Equipment compatibility:** fitting is suitable for main automated laboratory devices. Cards can be frozen and defrosted without distortion
- **Customizable:** AutoCollect™ cards can be customized according to your specifications: design, barcode, dimensions, branding, etc.

Applications

The Dried Blood Spot (DBS) method has been widely used for metabolic screening in newborns and is now successfully employed in:

PHARMACOKINETIC

TOXICOKINETIC

DRUG METABOLISM

PRECLINICAL

CLINICAL STUDIES

HUMAN IDENTIFICATION

BIOMARKERS SCREENING

VIRAL LOAD TESTING

AutoCollect™ cards are routinely used by DMPK laboratories for blood collection and analysis. As drug studies may involve the analysis of additional biological fluids such as saliva, urine, plasma, serum, the two variants of AutoCollect™ cards can accommodate the different kinds of toxicological, pharmacokinetic and pharmacodynamic studies.

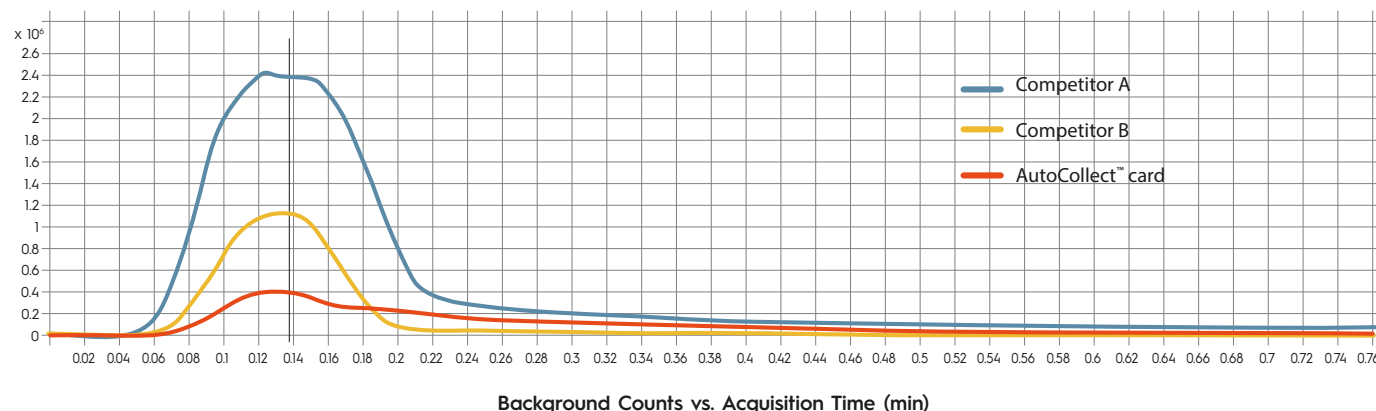
The white format of AutoCollect™ cards is suitable for collection of blood samples, whereas the pink format is appropriate for the collection of colorless samples such as saliva, buccal cells and urine.



Testing

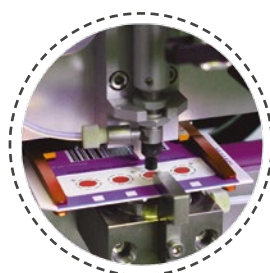
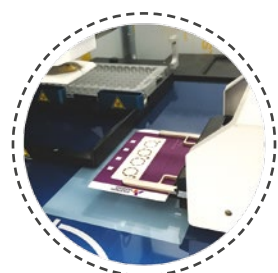
The performance of AutoCollect™ cards has shown strong advantages compared to equivalent solutions on the market:

- **Paper purity:** lowest background of AutoCollect™ card in Mass Spectrometry analysis
- **Precision and accuracy:** blood spot size is reproducible from one AutoCollect™ card to another and is easily recognizable by the machine scan (100% matching for blood spots)
- **On card stability:** no solubility of the inks with solvents commonly used in HPLC/MS and no deleterious effects of high quality converting on the performance of the fibers web structure



The future of DBS

At Ahlstrom-Munksjö we recognize the advantages of automation and the benefits that this technological advancement brings to high volume data analysis. This is why we are committed to working closely with manufacturers of automated equipment, supporting their initiatives and meeting their needs with our customized solutions.



Ahlstrom-Munksjö is a global leader in fiber-based materials, supplying innovative and sustainable solutions to customers worldwide. Our offerings include decor paper, filter media, release liners, abrasive backings, nonwovens, electrotechnical paper, glass fiber materials, food packaging and labeling, tape, medical fiber materials and solutions for diagnostics. Combined annual net sales are about EUR 2.15 billion and we employ 6,000 people. The Ahlstrom-Munksjö share is listed on the Nasdaq Helsinki and Stockholm. The company was formed on April 1, 2017 through the merger of Ahlstrom Corporation and Munksjö Oyj.

CONTACT AHLSTROM-MUNKSJÖ SALES

EMEA

☎ +49 37347 830

✉ diagnostics@ahlstrom-munksjo.com

North America

☎ +1 717 486 3438

✉ diagnostics@ahlstrom-munksjo.com

Asia-China

☎ +86 21 233 07 330

✉ diagnostics@ahlstrom-munksjo.com

South America

☎ +55 19 3878 9238

✉ diagnostics@ahlstrom-munksjo.com

LEARN MORE: WWW.AHLSTROM-MUNKSJÖ.COM

DISCLAIMER: The information supplied in this document is for guidance only and should not be construed as a warranty. All implied warranties are expressly disclaimed, including without limitation any warranty of merchantability of fitness for use. All users of the material are responsible for ensuring that it is suitable for their needs, environment and end use. All data is subject to change as Ahlstrom-Munksjö deems appropriate.

