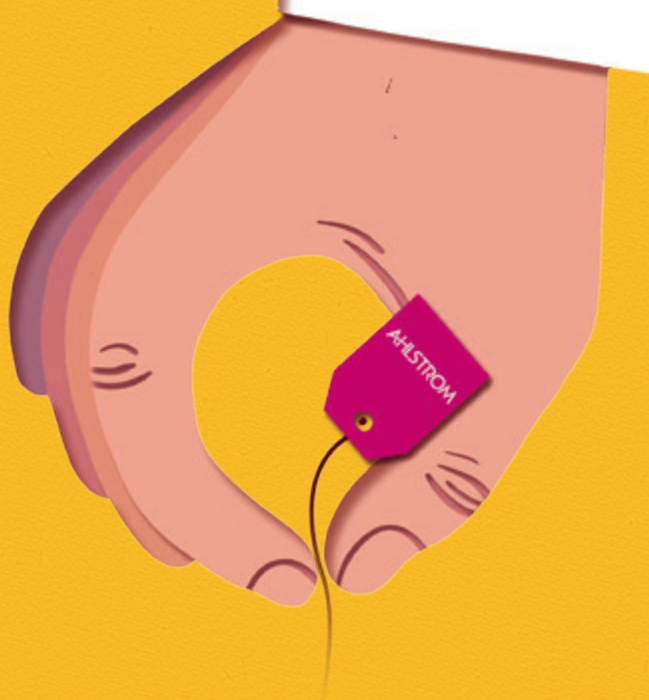


WE SEE TEA DIFFERENTLY.

THE FUTURE IS BREWING

AHLSTROM



OUR **MANIFESTO**

Producing tea and getting it to people's homes – from crop to cup – takes a lot of hard work and is a journey that takes thousands of miles to complete.

And yet it's the final part of that journey from crop to cup that matters the most: from box to boiling water.

To complete this journey, the humble tea bag plays the starring role. It's a small bag with a big responsibility.

Some may take tea bags for granted, but it's something you just don't want to get wrong.

And it's something Ahlstrom always gets right.



THE FUTURE IS BREWING



At Ahlstrom, everything we do is geared towards making every tea bag the perfect cup and the best tea it possibly can be.

Because at Ahlstrom we believe our ideas shouldn't just help our clients to make better tea.

WE WANT OUR IDEAS TO MAKE TEA BETTER.



SUSTAINABILITY NOW !

- Being environmentally responsible and transparent throughout the supply chain is essential. More and more brand owners are committed to ambitious targets for sustainability and waste management.
- At Ahlstrom we substantiate sustainability credentials with clear, quantitative studies and certificates, allowing brand owners to make sound claims.



QUALITY AND BREADTH OF PORTFOLIO

- To ensure continued purchase, brands need to ensure their portfolio is broad and future-focused.
- From Classic to BioWeb®; Ahlstrom offers the broadest portfolio of the market, allowing our customers to diversify their offer and stay visible and competitive. Our R&D program ensures we stay ahead of the curve for innovation.



CULTURE OF SERVICE

- We're continually challenging the industry's status quo: we invest heavily in innovation to help clients prepare for what's coming next.
- We're there for our clients every step of the way. Because what's the point of showing someone the future, if you're not going to help them get there?

BIOWEB®

Ahlstrom BioWeb® is the industry's first spun bond web produced from a renewable biopolymer, poly lactic acid (PLA). BioWeb® is renewable, compostable, and biodegradable and will revolutionize the way that you market your tea.

WHY CHOOSE AHLSTROM BIOWEB®?

DIFFERENTIATION

- BioWeb® filter's unique non-woven web is visually different to wet laid products, creating a clear differentiation from other product offerings

TASTE

- Get more taste out of your tea products thanks to BioWeb® filters' outstanding infusion and taste neutrality

TRANSPARENT

- BioWeb® filters' high transparency allows to showcase premium teas and infusions

FEEL

- Silky to the touch, BioWeb® feels like a high-quality textile

SUSTAINABILITY CREDENTIALS

- Based on 100% renewable raw materials
- Biodegradable and compostable

CONVERSION

- High output: designed for high conversion speed on heat-seal and ultrasonic machines



What is PLA?

PLA is a biopolymer derived completely from the sugars extracted from annually grown plants such as corn (maize). PLA meets the food contact requirements for US FDA CFR 21, part 176.170 and EU regulation 1935 (2004), and is compostable to EN13432.

A stylized illustration of a white tea bag with a red string, filled with dark red tea. A green plant with several leaves is growing out of the top of the tea bag. The background consists of rolling green hills.

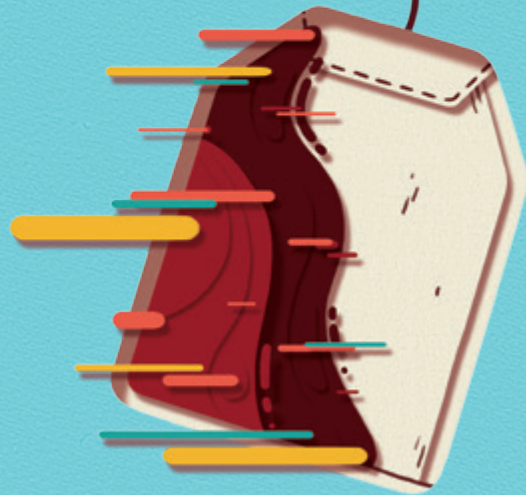
LET'S MAKE EVERY TEA
A GREEN TEA.

ROBUST™

MAKE ANY TEA BAG, FASTER.

Ahlstrom specialists have developed Robust™ variants for each of its tea offerings.

Faster, more reliable, stronger, choose Robust™ to supercharge your conversion process!



WHAT IS ROBUST™?

Robust™ is a dedicated fiber blend for our products, whether BioWeb®, InFuse heatseal or Classic non-heatseal.

- In our Classic and InFuse variants, this special blend makes our webs stronger, more flexible and it allows us to run more reliably and faster on current machines
- For InFuse, that also means no more bleed through during heatsealing, you can now run continuously!
- For our BioWeb®, the Robust™ version allows for increased mechanical stability and a wider heatseal window, which means no more lost time to adjust your equipment
- That means BioWeb® Robust™ can now be a substitute for traditional heatseal materials!

CONCLUSION

- Convert tea bags faster than ever with Robust™
- Its increased reliability makes it an ideal partner during production
- Its versatility allows for easy web switches

THE FUTURE IS BREWING

INFUSE HEATSEALABLE FILTER WEBS

For conversion on single or double chamber heat-seal tea packing machines, our InFuse family of products provides strong seals and fast conversion, excellent infusion, integrity during infusion, and the capability to apply a custom pattern through textilisation.

- InFuse filter webs offer optimal conversion on single or double chamber heat-seal tea packing machines and provide strong seals and fast conversion.

KEY BENEFITS:

- Outstanding taste through ideal infusion
- Offer optimal conversion
- Patterning capability through textilization

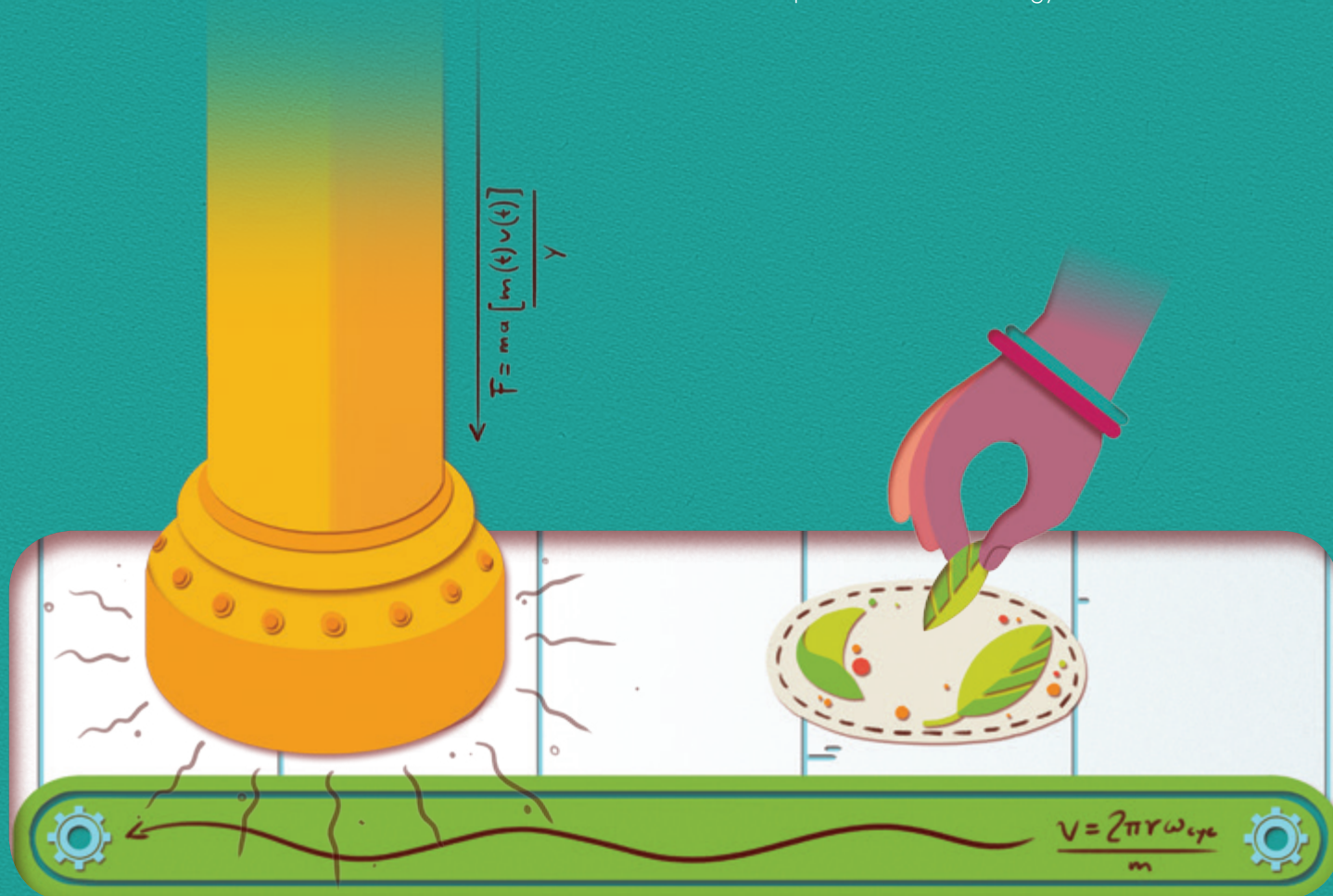
CLASSIC NON-HEATSEALABLE FILTER WEBS

For conversion on non-heatseal teabag packing machines, our Classic portfolio of advanced products deliver excellent infusion, outstanding tea blend retention, high yield conversion with a minimal rejection rate, superior crimp strength and head fold stability. Classic grades are manufactured with Ahlstrom patented "binder technology".

- Optimized for conversion on non-heatseal teabag packing machines, these technological products guarantee efficiency on your production lines

KEY BENEFITS:

- Optimum flavor expression
- Offers optimal high yield conversion, low rejects
- Excellent crimp strength and head fold stability
- Leaker proof "binder technology"



THE FUTURE IS BREWING

PRODUCT OFFERING

Product line	Product name	Grammage	Characteristics
Classic Non-Heatsealable	CD024550 / WL114550	12.3	Standard grade
	WL120140	12.8	Premium grade, leaker proof technology
Classic Robust™ Non-Heatsealable	WL124250	13.2	Premium grade, leaker proof technology (Perfecta Cup)
InFuse Heatsealable	CD020010	16.5	Standard grade, small diamond pattern (NOT Mai Sa EC12, C2000/T10)
	CD020270	16.5	Standard grade (NOT Mai Sa EC12, C2000/T10)
	WL115570	16.5	Standard grade (all HS packing machines except round bag and C2000/T10)
	WL123790	16.5	Standard grade (specifically for IMA C2000, Tecnomeccanica T10 only)
InFuse Robust™ Heatsealable	CD021500	16.5	Premium grade, small diamond pattern (for IMA C51)
	CD021360	16.5	Premium grade, plain (for IMA C51)
BioWeb® Heatsealable	CD50115M	18	Standard grade ultrasonic tea bag, Fuso, Sanko machines
	CD50082M	18	Standard grade, heat seal, universal pack, Tecnomeccanica T2
	CD50119C	18	Standard grade heat seal, universal pack, low humidity
BioWeb® Robust™ Heatsealable	CD50142M	18	Premium grade, point bond pattern, for fast Heatseal machines
	CD50156M	18	Premium grade, point bond pattern, for fast Heatseal machines, at high speed

A HUGE AMOUNT
OF RESEARCH
GOES INTO EVERY
AHLSTROM
TEA BAG.



Stay ahead™

Ahlstrom is a high performance fiber-based materials company, partnering with leading businesses around the world to help them stay ahead. Our products are used in a large variety of everyday applications, such as filters, medical gowns and drapes, diagnostics, wallcoverings, flooring and food packaging. We have a leading market position in the businesses in which we operate.

WHENEVER
THERE'S A
PROBLEM



THERE'S A
DIRECT LINE
TO THE
SOLUTION



Europe

✉ tea@ahlstrom.com

North America

☎ +1 770 650 2100
✉ tea@ahlstrom.com

South America

☎ +55 19 3878 9238
✉ tea@ahlstrom.com

Asia

☎ +86 21 6466 9222
✉ tea@ahlstrom.com



Learn more:
www.ahlstrom.com/tea/

DISCLAIMER: The information supplied in this document is for guidance only and should not be construed as a warranty. All implied warranties are expressly disclaimed, including without limitation any warranty of merchantability or fitness for use. All users of the material are responsible for ensuring that is suitable for their needs, environment and end use. All data is subject to change as Ahlstrom deems appropriate.