



Certificate CH09/0107

The organisation

Ahlstrom Specialties : Bousbecque plant

5 Rue de la Papeterie
F-59166 Bousbecque
France

has been assessed and certified as meeting the requirements of the standard

PEFC - Chain of Custody

PEFC ST 2002:2010 – "Chain of Custody of Forest Based Products – Requirements" - dated 26/11/2010
PEFC ST 2001:2008, Second Edition – "PEFC Logo Usage Rules – Requirements" – dated 26/11/2010
as amended and published on www.pefc.org
for the products detailed in the scope below

Purchase, reception and storage of PEFC certified pulp, production and sales of vegetable parchment and waterleaf 100% PEFC certified, surface treatment (outsourcing) – percentage method (credit of volume).

This certificate is valid from 8 January 2014 until 7 January 2019
and remains valid subject to satisfactory surveillance audits
Recertification audit due before 26 December 2018
Issue 4. Certified since February 2009

Authorised by

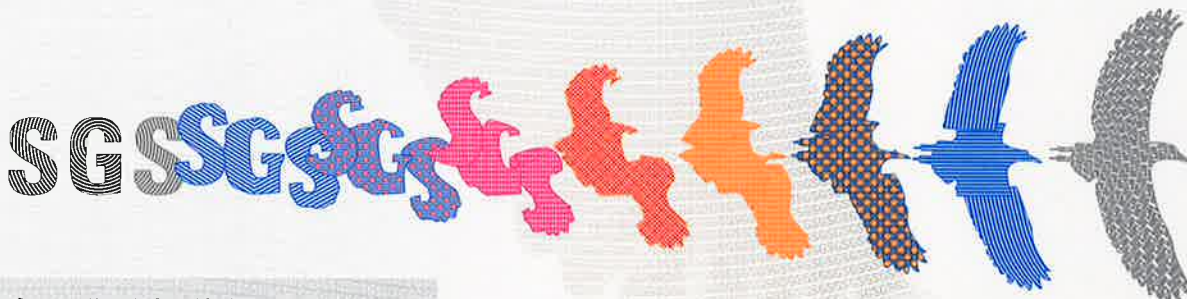
SGS Société Générale de Surveillance SA Systems & Services Certification
Technoparkstrasse 1 8005 Zurich Switzerland
t +41 (0)44 445-16-80 f +41 (0)44 445-16-88 www.ch.sgs.com

Organisations with a valid PEFC chain of custody certificate can only use the PEFC Logo with unique PEFC license logo number based on PEFC Logo usage license contract issued by the PEFC Council or another entity authorised by the PEFC Council and in accordance with the PEFC logo usage rules.



Accreditation No. SCESp 092

Page 1 of 1



This document is issued by the Company subject to its General Conditions of Certification Services accessible at www.sgs.com/terms_and_conditions.htm. Attention is drawn to the limitations of liability, indemnification and jurisdictional issues established therein. The authenticity of this document may be verified at <http://www.sgs.com/en/Our-Company/Certified-Client-Directories/Certified-Client-Directories.aspx>. Any unauthorized alteration, forgery or falsification of the content or appearance of this document is unlawful and offenders may be prosecuted to the fullest extent of the law.